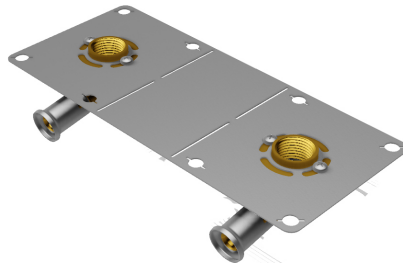


28PF-16041604: Double Backplate elbow female for plaster 16x1/2"



Commercial information

Hencofix: plaster wall mixing valve mounting bracket in Ø16 and Ø20

- Plate in stainless perforated steel (to switch the double-platinum, into single plates). A single reference for two configurations, optimizing your stocks.
- Connection with new incline for better implementation when fixing partition.
- Brass press fitting in one piece, for a perfect connection.
- Fitting in diameter 20x1/2" for showerhead with high flow. Exists also in diameter 16x1/2"

Basic unit dimensions

Height	40 mm
Length	230 mm
Width	100 mm
Net weight	0.450 kg

Certificates

QB (CSTBat), KIWA, KOMO, DVGW Wasser, ATG, ÖN EN 21003-2/-3, ÖVGW Wasser, ETA, STF, AFNOR, ACS, WRAS, GOST-R, PZH, ITC, TSU, DNV-GL, Sans 21003, Kontrol Biro, EMI

Applications

Potable water, Heating, Cooling, Compressed air, Sanitary

Solutions

Building installations, Industry, Utility, Shipbuilding

Technical characteristics

Housing material	Brass	Outer pipe diameter connection	16 Millimetre
Housing material	Brass	Medium temperature (continuous)	-10 70 Degrees celsius
Surface protection	Untreated	Max. operating pressure at 20 °C	10 Bar
Shape	Right-angled		
Thread size	1/2 inch		
System specific	✓		
Nominal diameter connection 2	1/2 inch (15)		
Connection	Press sleeve		
Thread size tap connection	1/2 inch		
Contour code	TH		
KIWA certified	✓		

Related products

Product code	GTIN	Description
BE16MINI3	05414764247178	Henco Jaw for press machine M-BMINI3 BE/TH-Profile 16mm

Image

