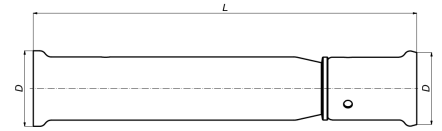


52P20: Easymounting/repair fitting 20



Commercial information

This fitting is the solution when you - accidentally - punctured a pipe. With this sleeve fitting you can quickly repair the pipe. Chip away, remove the leaking pipe, connect the fitting on both ends and press. Done.

Basic unit dimensions

Height	20 mm
Length	126 mm
Width	20 mm
Net weight	0.147 kg

Certificates

ATG, DVGW Wasser, ETA, KIWA, ÖVGW Wasser, WRAS, KOMO, STF, ÖN EN 21003-2/-3, GOST-R, ITC, TSU, QB (CSTBat), AFNOR, ACS, PZH, DNV-GL, EMI

Applications

Potable water, Heating, Compressed air, Cooling, Sanitary

Solutions

Building installations, Industry, Utility, Shipbuilding

Technical characteristics

Material connection 1	Brass	Bend radius	0 Millimetre
Material quality connection 1	CuZn40Pb2 (CW617N)	Outer pipe diameter connection 1	20 Millimetre
Surface protection connection 1	Untreated	Outer pipe diameter connection 2	20 Millimetre
Surface treatment connection 1	Untreated	Length	126 Millimetre
Material connection 2	Brass	Length of connection 1	20.8 Millimetre
Material quality connection 2	CuZn40Pb2 (CW617N)	Working length connection 1	20.8 Millimetre
Surface protection connection 2	Untreated	Length of connection 2	99.7 Millimetre
Surface treatment connection 2	Untreated	Working length connection 2	99.7 Millimetre
Shape	Straight	Wrench width	0 Millimetre
Reducing	✗	Wrench width union nut	0 Millimetre
Eccentric	✗	Medium temperature (continuous)	-10 70 Degrees celsius
System specific	✓	Max. operating pressure at 20 °C	16 Bar
Connection 1	Press sleeve	Standard Dimension Ratio (SDR)	0
Contour code connection 1	TH		
Connection 2	Press sleeve		
Contour code connection 2	TH		
Main colour fitting	Brass		
Material sealing	Ethylene-propylene diene monomer rubber (EPDM)		
With buffer stud	✓		
High tensile strength	✗		
With thermal insulation	✗		
Ring stiffness class	Other		
With sealing rings/gaskets	✓		
Capped	✗		
With drain valve	✗		
With de-aerator	✗		
FM quality mark	✗		
LPCB quality mark	✗		
ULC quality mark	✗		
UL quality mark	✗		
DIN-CERTCO certificate	✗		
VdS quality mark	✗		
With approval for TÜV	✗		
DVGW quality mark for gas	✗		
DVGW quality mark for water	✓		
KIWA certified	✓		
Gastec QA mark	✗		
KOMO certified	✓		
Type approval according to BBR/EKS	✗		

Related products

Product code	GTIN	Description	Image
BE20MINI3	05414764216822	Henco Jaw for press machine M-BMINI3 BE/TH-Profile 20mm	